

Question Booklet Series:

A

Polytechnic Written Test– 2014 QUESTION BOOKLET

INSTRUCTIONS

Question Booklet Number:

102248

Maximum Time Allowed : 3 Hours

Negative Marking : 0.2

No. of Questions: 180

Maximum Marks: 180

Roll Number:

Answer Sheet Number:

Please read the following instructions carefully:

1) **Check the booklet thoroughly:** In case of any defect – Misprint, Missing question(s) or duplication of question(s) / Page(s), get the booklet changed with the booklet of the same series from the Room Invigilator. No complaint shall be entertained after the entrance test.

2) Write your Roll Number and the OMR Answer Sheet Number on the question booklet.

3) Mark carefully your Roll Number, Question Booklet Number and Question Booklets series on OMR Answer sheet and sign at the appropriate place. Incomplete and/or incorrect particulars will result in the non-evaluation of your answer sheet.

4) Strictly follow the instructions given by the Centre Supervisor / Room Invigilator and those given on the Question Booklet.

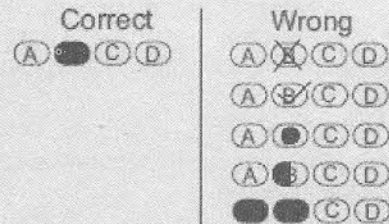
5) Candidates are not allowed to carry any papers, notes, books, calculators, cellular phones, scanning devices, pagers etc. to the Examination Hall. Any candidate found using, or in possession of such unauthorized material, indulging in copying or impersonation or adopting unfair means / reporting late / without Admit Card will be debarred from the written test.

6) Please mark the right responses on the OMR Sheet with ONLY a Blue/Black ball point pen. Use of eraser, whitener (fluid) and cutting on the OMR Answer Sheet is NOT allowed.

7) The test is of objective type containing multiple choice questions (MCQs). Each objective question is followed by four responses. Your task is to choose the correct/best response and mark your response on the OMR Answer Sheet and NOT on the Question Booklet.

8) There will be 0.2 negative marking for every wrong answer.

9) For marking response to a question, completely darken the CIRCLE so that the alphabet inside the CIRCLE is not visible. Darken only ONE circle for each question. If you darken more than one circle, it will be treated as wrong answer. The CORRECT and the WRONG methods of darkening the CIRCLE on the OMR Answer Sheet are shown below.



10) Please be careful while marking the response to questions. The response once marked cannot be changed and if done shall be treated as wrong answer.

11) In view of the tight time span, do NOT waste your time on a question which you find to be difficult. Attempt easier questions first and come back to the difficult questions later during the test.

12) DO NOT make any stray marks anywhere on the OMR Answer Sheet. DO NOT fold or wrinkle the OMR answer sheet.

13) Rough work MUST NOT be done on the OMR Answer Sheet. Use your test booklet for this purpose.

14) Candidates are provided carbonless OMR Answer Sheet having original copy and candidate's copy. After completing the examination, candidates are directed to fold at perforation on the top of the sheet, tear it to separate original copy and candidate's copy and then hand over the original copy of OMR Answer Sheet to the Room Invigilator and take candidate's copy with them.

DO NOT OPEN THE SEAL OF THIS BOOKLET UNTIL TOLD TO DO SO

Section 1 - English

1. Complete the sentence with the suitable pronoun:
- When I discovered as a young man that my freedom had already been taken from _____, then I began to hunger for it.
- (A) I
(B) Myself
(C) Me
(D) Mine
2. Complete the sentence with the suitable modal auxiliary verb:
- I had no radio, no compass, and I _____ see where I was.
- (A) Should not
(B) May not
(C) Could not
(D) Would not
3. Complete the sentence with the correct answer:
- That evening, after I _____ the rest of my homework, the note about the essay caught my eye.
- (A) Had been finishing
(B) Would be finishing
(C) Had finished
(D) Was finished
4. Complete the sentence with the suitable idiomatic expression:
- Look how she _____ into our conversation, just as though she were a grown lady."
- (A) Puts her nose
(B) Pokes her nose
(C) Inserts her nose
(D) Pinches her nose
5. Choose the correct reported statement:
- Natalya: "Papa, please tell this gentleman who owns Oxen Meadows"
- (A) Natalya asked her father to please tell that gentleman who owned Oxen Meadows.
(B) Natalya requested her father to tell that gentleman who owns Oxen Meadows.
(C) Natalya requested her father to tell that gentleman, who owned Oxen Meadows.
(D) Natalya requests her father to tell that gentleman who the owner of Oxen Meadows was.
6. Complete the sentence with the suitable modal auxiliary verb:
- There were drawings all over the room-there _____ a hundred of them, all lined up.
- (A) Would have been
(B) Needed to be
(C) May have been
(D) Must have been
7. Place the adverb at the appropriate position:
- She was getting good ideas for her drawings.
(probably)
- (A) She was getting probably good ideas for her drawings.
(B) She was probably getting good ideas for her drawings.
(C) She was getting good probably ideas for her drawings.
(D) She was getting good ideas for her probably drawings.
8. Choose the correct word to complete the sentence:
- She sat in the corner of the room _____ the rough boys who did NOT make good marks sat.
- (A) Which
(B) Whom
(C) When
(D) Where
9. Complete the sentence with the suitable pronoun:
- The oppressed and the oppressor alike are robbed of _____ humanity.
- (A) His
(B) One's
(C) Their's
(D) Their
10. Complete the sentence with the suitable pronoun:
- A wedding toast is a custom _____ a close friend or relative of the groom or the bride says a few words to wish the couple.
- (A) When
(B) That
(C) Where
(D) Whom

